

THE SOUTHERN ARIZONA WATERCOLOR GUILD

Sketchbook



NOVEMBER 2018

www.southernazwatercolorguild.com

New Member Event and "Nuts and Bolts of Entering a Show"

On Saturday, November 17th, SAWG will hold a combined New Member Event/Nuts and Bolts of Entering a SAWG Show in Room 30/31 at St. Francis in the Foothills (UMC). When you join a large group, like SAWG, you can feel a little lost sometimes.

From 1pm – 2pm, SAWG President Karyn Vampotic will lead new members in an opportunity to get to know other new members in a fun setting and learn about some of the benefits of SAWG membership.

From 2pm – 4pm, Marti White, VP of Shows, Nancy Holmberg, Past President, and Nancy Huber, Image Archivist (and the person who receives your show image) will lead new members in the step by step process to entering a SAWG show. Nancy Huber will focus on resizing your photograph to the appropriate entry size. For maximum benefit, participants are strongly encouraged to bring their laptop.

New members will receive an email invitation to this event by Thursday, October 18th. This program is open to the first 20 new members to RSVP to Karyn at President@southernazwatercolorguild.com, no later than October 31. After October 31st, if there are still openings, the program will open to the general membership. An RSVP followed by a confirmation of acceptance by Karyn is MANDATORY due to space restrictions.

Membership Directories are Here!

The 2018-19 Directories are here! Be sure to pick up your copy at the next General Meeting - November 12th, or at the Gallery.

SCHOLARSHIP FUNDRAISER – ART GARAGE SALE

SATURDAY, November 3rd - 11am to 3pm

Reminder! Art Supply Garage Sale at the Gallery November 3rd benefiting the Scholarship Fund. Come shop for bargains on supplies, frames, etc. Donations of unwanted art supplies are much appreciated and can be brought to the gallery anytime from Oct 25 to Nov 2. Cash donations are also welcome.

Contact Sue Rumsey at 490-9499 or sue.rumsey@comcast.net for questions or if you are unable to deliver your donations.

NEXT GENERAL MEETING MONDAY, NOV. 12TH SOCIAL - 6:30pm ST. FRANCIS CHURCH TABLE OF CONTENTS

PAGE 1

NEW MEMBER EVENT
GARAGE SALE

PAGE 2

PRESIDENT'S MESSAGE
SHOW NEWS

PAGE 3

SHOW NEWS

PAGE 4

MORE SHOW NEWS

PAGE 5

WORKSHOP NEWS

PAGE 6

PROGRAMS NEWS
MEMBERSHIP NEWS
TASK FORCE

PAGE 7

GALLERY NEWS
MEETING SCHEDULE

*Sign up
Now!*

2018-19 WORKSHOP SCHEDULE

November 13-16, 2018

Pat Weaver

January 15-16 & 17-18,
2019

Randy Hale

February 12-15, 2019

Lian Quan Zhen

March 12-15, 2019

Fealing Lin



MESSAGE FROM THE PRESIDENT



Now that the weather is finally looking like fall and our snowbirds are starting to wing their way back to us, the energy is palpable.

I'd like to invite all of our members to one or more of SAWG's monthly brainstorming sessions. When I think of "brainstorming" I get a vision

of lightning and claps of inspiration! Here's YOUR chance to share your thoughts in this year of innovation. Come to one of our single issue brainstorming sessions. If you missed Marty Plevel's session on our scholarship program and have ideas how to better connect with local art teachers or anything else to do with our scholarship program, please email Marty at mplevel@. We select high school students from the area who have an interest in pursuing their art into college and gift them with an incentive to continue to foster their creative side. If you missed this opportunity to share your ideas, you can still send them to Marty.

Our next brainstorming session is the launch pad to propel SAWG's visibility into the community, increase attendance at our shows and sales. Meet Sandra Montgomery and Risa Waldt, the fabulous "make it happen" duo in charge of publicity at the gallery on Friday, November 16th at 10am at the gallery.

If you have any experience in publicity or none at all, if you do work for another nonprofit and want to take advantage of Sandra's vast expertise in accessing free or inexpensive advertising for your other organization, or if this is the way you think you'd enjoy promoting SAWG, come on November 16th and help Sandra and Risa make the magic happen.

Our fabulous programs that feature demonstrations by nationally known artists begins at our November 12th general meeting with Pat Weaver. This is your exceptional opportunity to experience different techniques and style as part of your membership. See if her style is for you at www.patweaver.net and consider entering her four day workshop beginning November 13th. Challenge yourself to boost your talent!

Membership and show entries are the keys to SAWG's sustainability. We are pleased to have so many new members join us. It's so important that we all invite new and former members to join us to continue our amazing story for the next 51 years! Please continue to look for the members at meetings with RED badges. These are our new members. Don't let them sit alone!! Let them feel the warmth and dynamic SAWG energy so that they want to stay in our family and want to reach out and invite their friends aboard!!! See you in November!

Karyn

Remember - To submit any articles for the Sketchbook to Sandy Walker, walkersj@cox.net. Deadline is always the 15th of each month.

SHOW NEWS

All Members' Show

Congrats!

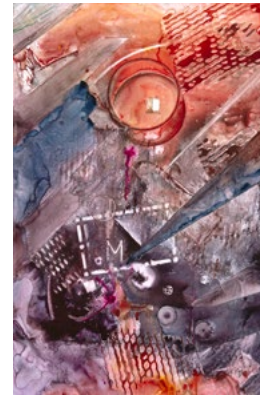
Best of Show
Sandy Walker
Green Things

Award of Excellence
Kat Manton-Jones
Sweetest Melody

Award of Merit
Peggy Rubin
Staccato

Honorable Mention
Yvonne Hayes
Blue Heron

Honorable Mention
Emily Amadhia King
Mexican Grey Wolf



Reception



COLOR MY WORLD SHOW



The SAWG walls are covered with the colorful creations of our artists. Thank you to all the artists that entered the show. Our juror, Pat Weaver, who will be presenting a workshop November 13-16th, curated the exhibition and will select award winners. Awards will be announced at the reception, Thursday, November 15th, 5-7 p.m. Please join us at the gallery for the reception. If you will have relatives in Tucson for the Thanksgiving holiday, consider bringing them to the gallery to see this lovely show.

Homage to Mom
Botswana Burden
Cape Cod Buoys
Chicken Scratch
Expressions Peggy Steffens

Anna Don
Lura White
Robert Jennette
Judy Nakari

Show Question?????

A question was raised at the last general meeting about the lack of acceptance dates on our SAWG Show page and show entry forms. If all images, entry forms, and checks are received by the show deadline, the images can be sent to the juror the day after the deadline for entry. In some cases, it may take an extra day to make sure that we have all the entry forms and checks accounted for before we can send the images to the juror. Images can't be sent until ALL images and entry forms have been received and accounted for. Once the images are sent, the juror is given a week to make their decisions. As soon as the V.P. of Shows receives that information, it is distributed to show chairs for communication to entrants. As you can see, there are several variables, the most important of which is that all entrants submit correct materials by the deadline date. We would hope to notify entrants of the juror's decisions 7-8 days after the deadline. We hope this clears up why you don't see those notification dates.

Holiday Show

The Holiday Show is a rapidly approaching!

There are changes to our very popular and best selling show of the year!

- The MINIMUM price is \$50 per painting
- The MAXIMUM price is \$199 per painting
- Minimum size is 4x4 inches and Maximum size is 16x20 inches framed size
- The entry fee is \$26 for 1- 2 paintings, \$40 for 3 to 4 paintings

This is not a juried or judged show but we still need 2 jpgs sent to Nancy Huber for advertising purposes online

Paintings must still be water-based media and when you sell a painting, you may replace a painting. We encourage everyone to enter, especially new members.

Deadline for Entries - November 23, 2018

Enter Now!

**November 12
Deadline!**



Western Fed San Diego - 2019

The WFWS 44th Exhibit will be hosted by the San Diego Watercolor Society May 2019. Please download this year's prospectus (all four pages need to be printed out separately) from the lower right section of the "Shows" page on the SAWG Website. Consider which paintings you will enter to meet this year's deadline of November 12th. That's the earliest it has ever been so you'll have to get right at it! Please read all the instructions carefully as they can differ from year to year. Make sure you mail your entry form and check to Susan Morris, and send the .jpg entries to Nancy Huber. GOOD LUCK!

submitted by - Susan Morris

2018-19 Show Schedule

Color My World Show

NOVEMBER 6, 2018 - DECEMBER 2, 2018
RECEPTION, THURSDAY, NOVEMBER 15, 5-7PM

Holiday Show

DECEMBER 4, 2018 - JANUARY 6, 2019
RECEPTION, THURSDAY, DECEMBER 6, 5-7PM

Annual Show

JANUARY 8, 2019 - FEBRUARY 3, 2019
RECEPTION, THURSDAY, JANUARY 17, 5-7PM

Signature Show

FEBRUARY 5, 2019 - MARCH 3, 2019
RECEPTION, THURSDAY, FEBRUARY 14, 5-7PM

Fiesta Sonora

MARCH 5, 2019 - MARCH 31, 2019
RECEPTION, THURSDAY, MARCH 14, 5-7PM

Experimental Show

APRIL 2, 2019 - APRIL 28, 2019
RECEPTION, THURSDAY, APRIL 11, 5-7PM

Sign up Today!

Workshops 2018-2019



WORKSHOPS GALORE!

The Pat Weaver workshop is almost upon us, and you'll have a chance to see her in action at this month's meeting. There are still a few openings in the workshop. Pay online at our website or see Judy Constantine at the meeting to secure your spot!

The next workshop, kicking off the New Year, is Randy Hale, who will run two two-day workshops, starting January 15, 2019. There are just a few spots open for his first one, and quite a few more for his second. (I've signed up for his second, figuring that he will get better with practice!) Since these require less of a time and financial commitment, it's a good chance to study with a renowned, popular watercolor artist. Sign up on-line or see Judy at the meeting.

There are also open seats in both Lian Quan Zhen and Fealing Lin's workshops. Check out their websites, and look at their supply lists on our website to see if these wonderful watercolor artists and instructors can inspire your own creativity. These workshops can be reserved for you by a down payment on our website, or see Judy at the meeting. We look forward to sharing our beautiful workshop space and talented artists with you!



Contact Judy Constantine, the workshop registrar, with any questions.

Submitted by - Judy Constantine, Workshop Registrar

Coming Soon!



Randy Hale

TWO Sessions! January 15 & 16,

January 17 & 18, 2019

\$225 SAWG Members •

\$275 Non-Members per session

“Making a Splash with Watercolor”

All Skill Levels (maximum of 18)



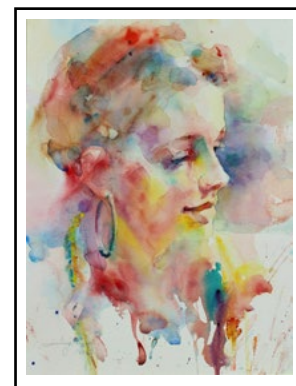
Lian Quan Zhen

February 12-15, 2019

\$395 SAWG Members • \$495 Non-Members

“Watercolor Paint Themselves”

All Levels (maximum of 22)



Fealing Lin

March 12-15, 2019

\$395 SAWG Members • \$495 Non-Members

“Luminous Watercolor Portraiture”

Intermediate to Advanced Skill Levels (maximum of 25)

Publicity

Single Topic Brainstorming Session PUBLICITY/MARKETING/OUTREACH COMMITTEE

The Publicity/ Marketing/Outreach Committee meets November 16th 10 – 12pm at the gallery for a “brainstorm” session. If you are interested in working with Publicity, we welcome you! Share your ideas! We are actively searching out additional sources of free advertising to increase our presence and sales of YOUR paintings.

Can you be our point person to post our seven free listings monthly in various media? Do you have other ideas to increase SAWG’s visibility in the community? Risa Waldt and Sandra Montgomery are running full tilt and are now in a position to increase the size of the Publicity Committee to reach even more advertising venues.

Come join Sandra and Risa on Friday morning, November 16th at 10am at the gallery! Any questions, contact Sandra Montgomery, 520 850-5644, sanfmontgomery@aol.com, or Risa Waldt, Risa @Risawaldtfineart.com 520-825-9601

submitted by - Sandra Montgomery & Risa Waldt



MORE Publicity...

Also, SAWG is running promotion announcements November 6 and 7th on KUAZ PBS Radio, AM/ FM. We are announcing the Color My World Show for November. Ads run 5:30am – 7:00pm, prime time. We have listings for the show in Zocalo, Desert Leaf, Tucson Weekly online, Caliente Tucson Newspaper, and TucsonLocalMedial online, which is Northern Explorer, Foothills News, Marana News. Also, online is an ad for Color My World on KUAZ and KXCI Radio. Most online ads have a color photo that will appear.

As of: October 15, 2018 —

Bank Balances: SAWG

Wells Fargo Bank:	Restricted Accounts:
General Fund Checking\$31,104	Scholarship Checking.....\$ 1,707
General Fund Savings\$28,782	Western Fed.....\$10,274
Total.....\$59,806	Hollander Scholarship\$11,592
	Total.....\$23,573

American Frame Discount

If our members use the code ALLIANCE2018 when they place an order, they should get the discount.

PROUD MEMBER OF THE



AN AMERICAN FRAME
ALLIANCE
PROGRAM

PROGRAMS NEWS

DVD Library News

The DVD library is up and running for this year! DVDs are available for rent for \$1.00 per DVD for one month’s use and are always available at the monthly meetings. Money collected for rent pays for new DVDs to add to the library.

The newest DVD in our collection is Pat Weaver’s “Painting Animals.”

If you want to reserve DVDs to pick up at the monthly meeting, you can email Karen Brungardt at dockie@Q.com and I’ll have them ready for you to pick up at the meeting. The updated list of DVDs is found online at our website under “Members”, then choose “Resources” and then find the list. When you email me, please provide the NAME of the artist and the TITLE of the DVD for reserving.

DVDs may be returned to me at the next meeting OR returned to the Gallery and placed in the DVD library folder. If you take it to the Gallery, you MUST email Karen or call or text (825-1845) her to let her know it is in the file folder. Thanks!

Happy Viewing!

Submitted by - Karen Brungardt

MEMBERSHIP NEWS

MEMBERSHIP NEWS!

WELCOME NEW MEMBERS!

Carolyn Gonzales
Carole Hillsbery
Kathi Sanders
Pauline Savage
M. Jeanne Savard
Edlynne M. Sillman
Kit Kimball
Lora Wright

REMINDER
Member News
goes in the
Seat
Announcements

Please remember to turn in your form once you reach a new status. We’ll help when needed, but it’s up to you to track your point shows. For more details CHECK online under Membership.

VOLUNTEERING as a SAWG Gallery docent can be a lot of fun!

Meet fellow members, greet the public, sell art!

And lastly, it's a lot more fun if you are up to date on gallery procedures. There are some new ones, but nothing is too difficult. An orientation session is just the thing to bring you up to date, whether you're a new or renewing member.

We will be having orientation sessions on November 14, December 12, and January 9. All at 1pm at the Gallery. Going forward we plan to use the 2nd Wednesday of each month as an orientation day, barring scheduling conflicts. Dates will be in the newsletter each month. If by any chance you need a different date, that can be worked out.

To sign up contact Kitty Sturrock at kittysturrock@gmail.com or 262-893-4982.

Submitted by Monica Hart

Gallery Stats for September with a comparison to 2017 and 2014 (River Gallery):

Total Revenue:	2018 \$1,345	2017 \$1,301	2014 \$2,467 (includes calendar sales)			
Total Visitors:	2018 - 105	2017 - 68				
By Day of Week:	Tuesday	Wednesday	Thursday	Friday	Saturday	Sunday
	2018 Closed	2018 4	2018 28	2018 13	2018 38	2018 22
	2017 8	2017 24	2017 12	2017 13	2017 14	2017 14
By Time of Day:	9-11	11-1	1-3	3-5	Members Only:	
	2018 7	2018 41	2018 50	2018 7	2018 50	
	2017 0	2017 27	2017 30	2017 11	2017 50	

Revenues were down this month, but attendance was up. This may be attributed to our shows this summer. The goal was to increase community involvement and to increase traffic. We were very successful.

The Aprons are popular!

They're going FAST!

The proceeds of the \$20 cost of the new aprons goes directly to the scholarship fund! You can pick one up at the gallery while supplies last!



Remember! **NEW** MEETING AND WORKSHOP LOCATION!

ST. FRANCIS IN THE FOOTHILLS UNITED METHODIST CHURCH • 4625 E. RIVER RD.

The Celebration & Arts Center at St. Francis in the Foothills United Methodist Church at River and Swan will be our new home for meetings and workshops. Lots of well-lit parking is available near the brand new building. It should serve our guild well.



Clip and Save! MEETING SCHEDULE

November 12,	Monday	7-9pm	General Meeting	Pat Weaver, Artist Demo
December	TBD			
January 14,	Monday	7-9pm	General Meeting	Randy Hale, Artist Demo
February 11,	Monday	7-9pm	General Meeting	Liam Zhen, Artist Demo
March 11,	Monday	7-9pm	General Meeting	Fealing Lin, Artist Demo
April TBD				
May TBD				